



Te Ao Matihiko.

# A Code of Legacy

Elle Archer

<https://ellearcher.nz>



2024  
MulticoreWorldXI





**MBA**  
Reshape your career

UC UNIVERSITY OF  
CANTERBURY  
Enquire now for 2022  
canterbury.ac.nz/mba

# Multi-verse Snapshot

**boma** | transformational  
new zealand | directors

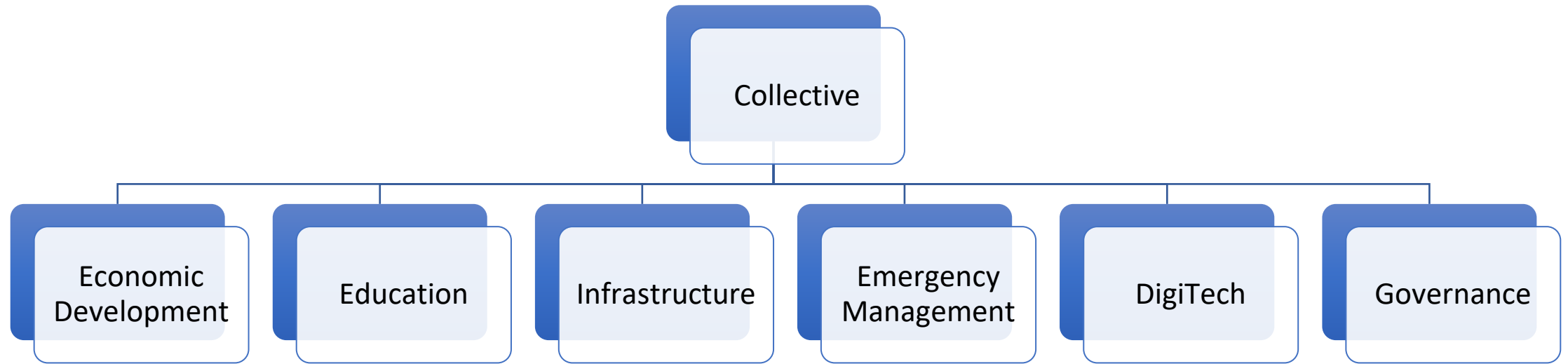
"As we move from *me* to *we*, we need to better understand how to lead converging ecosystems - this is the space to aid in the exploration of this thinking."

— Elle Archer

Managing director, ELG Limited Board trustee,  
Ako Ōtautahi Learning City Christchurch



# Local, Regional, National, and Global Weaving



Unification Kaupapa - Kotahitanga - Servanthood





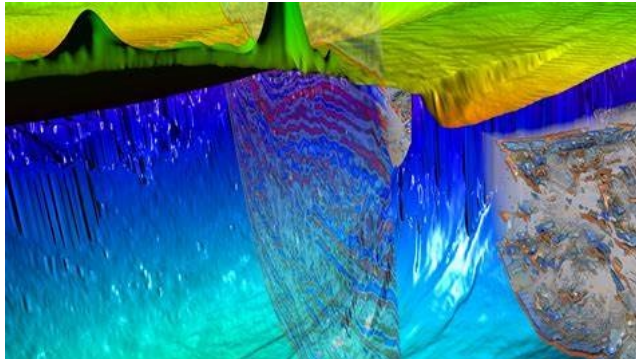
# Kaitiakitanga

---

Guardianship and stewardship of  
the environment







ENVIRONMENTAL MONITORING- HOW'S OUR  
WHENUA (LAND) DOING??



**WHAT ARE WE CONTRIBUTING TOO?  
WHAT ARE WE SHAPING?  
IS IT OUR RESPONSIBILITY AS TECHNOLOGISTS  
TO KNOW AND CARE?**

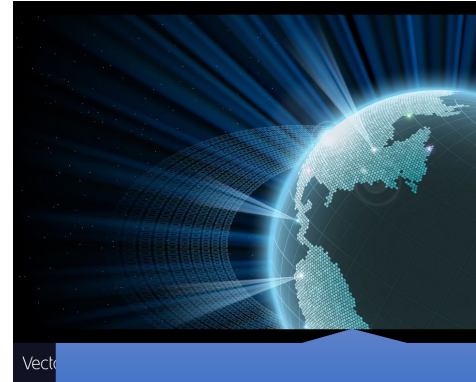
# Digital Enrichment - Key Impacts and Outcomes



Drives Innovation



Efficiency and Resource Optimisation



Global Competitiveness



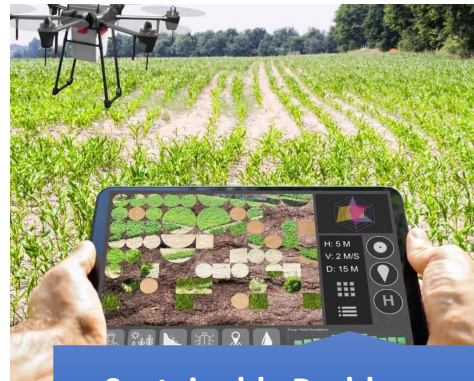
Connectivity and Collaboration



Inclusive Education



Resilience and Adaptability



Sustainable Problem Solving



Inclusivity and Flourishing Communities



Commitment to a Brighter Future

Our Equitable Focus  
+Our Data  
+Our Analysis  
= Targeted Intervention

Future Ready and thriving, with technology as an enabler for all

Digital Equity – Digital Inclusion – Digital Excellence – Digital Enrichment

---

**M**otivation

---

**A**ccess

---

**S**kills

---

**T**rust

---

**S**afety

---



'We cannot control the wind, but we can adjust the sail'

# Let's get philosophical.....

Martha Nussbaum

Sir Mason Durie

John Locke

Immanuel Kant

John Stuart Mill

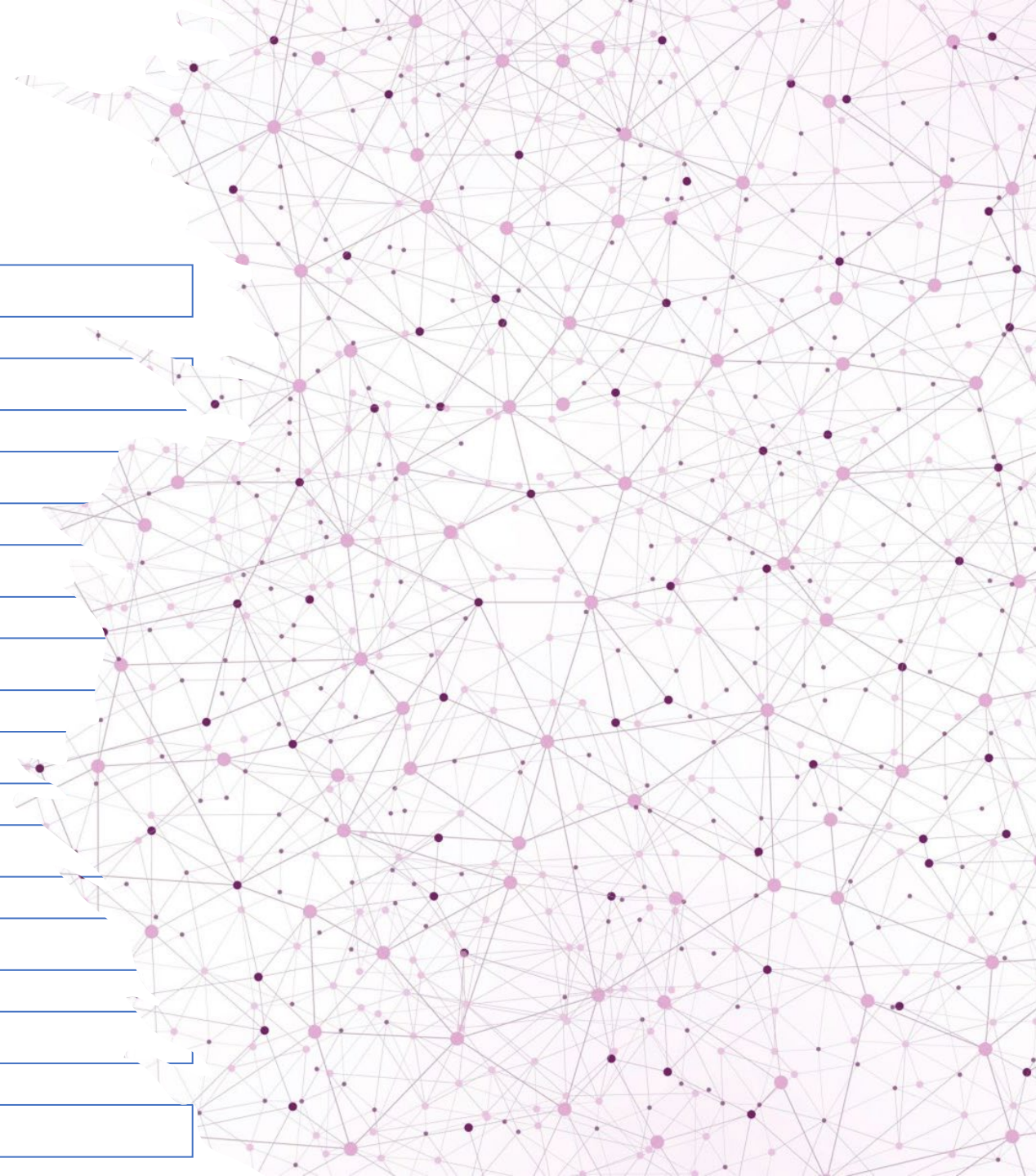
Jean-Jacques Rousseau

Hannah Arendt

Karl Marx

Martin Heidegger

Aristotle



# Cultural Preservation, Identity, and Legacy



# Anga Whakawhanaketanga Hangarau

Indigenous Technological Development  
Framework

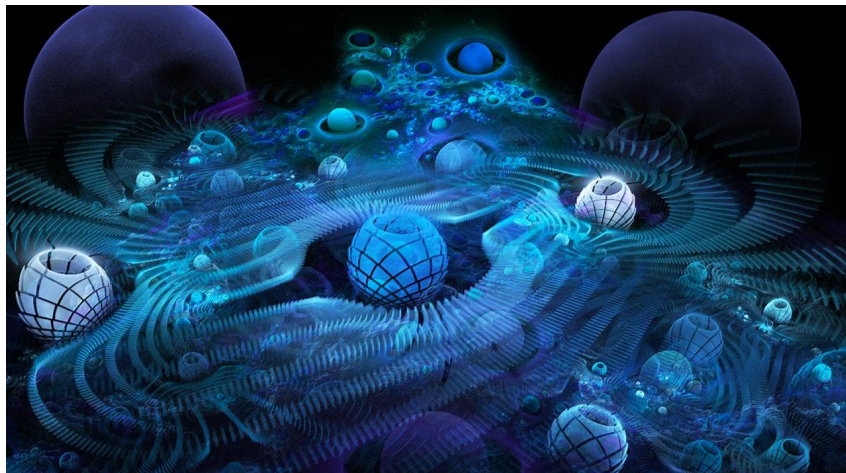
**Reo me te Tuakiri**  
Language and Identity

**Te Pono Ahurea**  
Cultural Integrity

**Te Haepapa Hangarau**  
Technological Responsibility

**Te Whākotahitanga**  
Inclusivity

**Te Tuku Iho Tauwhiro**  
Sustainable Legacy



# A Vision of Digital Enrichment

A future where innovation knows no bounds, where efficiency and resourcefulness are the norm, and where global interconnectivity within our localised spaces thrives. In this vision, digital enrichment fosters inclusive education, drives economic growth/resilience, and empowers communities to tackle local and global challenges, all while committing to a brighter, sustainable, and innovative tomorrow.



# Our WERO to YOU

---

- Think big and long-term
- Understand your own backyard first – SCOPE
- Pull your Ecosystem Together and co-design with the communities in which you serve
- Prioritise your DE Challenges – Customised to Place and People
- Formulate a Strategy
- Tactical Implementation Plan w/ Timeline
- .....Get on with it!!

We are here to help

---





Te Ao Matihiko.



TE HAPORI  
MATIHIKI

STAY CHOICE  
NGĀ MIHI E HOA MĀ  
[ELLE.ARCHER@OUTLOOK.COM](mailto:ELLE.ARCHER@OUTLOOK.COM)



TE MATARAU  
THE MĀORI TECH ASSOCIATION